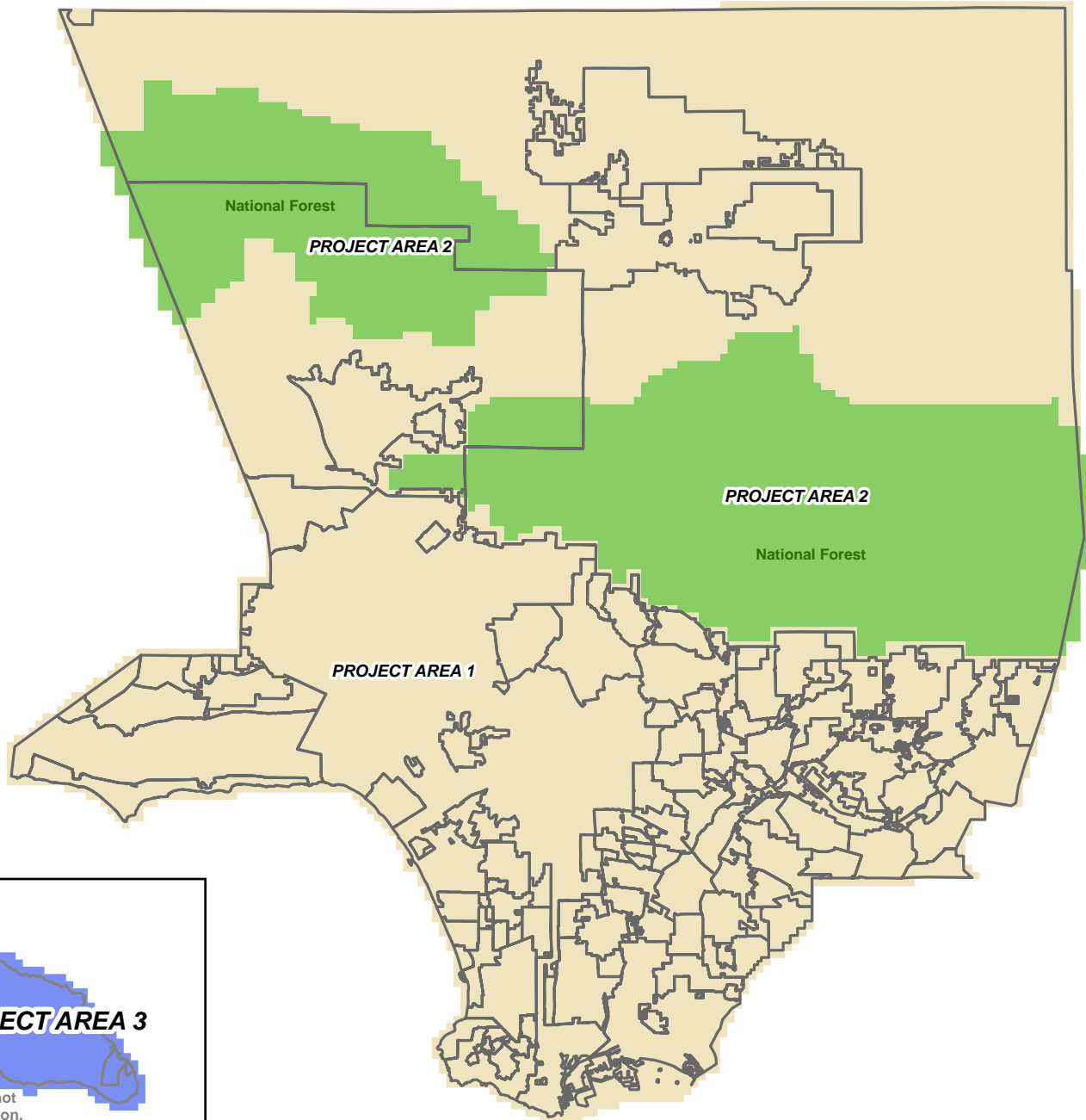

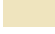


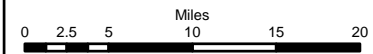


# LAR-IAC 2 Project Areas



 Cities/Communities Boundaries

- Project\_Areas**
-  AREA 1: 2,898 sq. mile
  -  AREA 2: 1,056 sq. mile
  -  AREA 3: 75 sq. mile



Created: 10/04/2007  
Location: \\Gis\_ms4\temp\_db\LARIAC\_2\  
Final\_layers\_ProjectAreas\_Oct2007.mxd



Santa Catalina Island not shown in its true location.

