



Pushing EFS Out to Your Users (Batch Roll-Out) & Integrating a New Pictometry Oblique Warehouse

Los Angeles County
Dept. of Regional Planning
GIS Section

November 20, 2008

Background

- Some of us work for small departments consisting of few EFS users (15-20).
 - EFS can be upgraded and installed on a machine by machine basis with minimal effort and time.
- Some of us work for large departments consisting of many EFS users (20-200+).
 - Installing EFS on one machine at a time will be very time consuming.

Goal

- My goal was to find a way to uninstall EFS 2.6 and install EFS 2.7 in an automated manner.
- Several programs are capable of network installations...
 - However, I am not an IT specialist...I do GIS.

Solution

- Yameen Hashmi of the Assessor's Office had already pushed out EFS to over 200 machines and was kind enough to share his methodology.
 - However, his course of action was tailored to his specific department and needed to be customized to better fit Regional Planning's network systems.

Customizing a Batch File

- The Assessor gave me their batch file to customize to DRP's network...
- A batch file is a text file containing a series of commands that will be executed by the computer.
- When a batch file is run, the computer reads the file and executes its commands, usually line-by-line.

My Finished Batch File

```

EFS2.7.bat - Notepad
File Edit Format View Help
Batcho off

::uninstall EFS2.6
if exist "C:\Program Files\Pictometry\EFS2.6" goto uninstall old version of EFS program

::uninstall old version of EFS program
Batcho Uninstalling EFS 2.6
MsIExec.exe /X{619DA2CA-8821-4833-9BA7-E8C94F4DF0B2} /qn
MsIExec.exe /X{072F8937-E433-470F-89A9-82DF8C8B0044} /qn
MsIExec.exe /X{8756AE20-0985-485D-8B3F-0B9A3AB00035} /qn
MsIExec.exe /X{FE2F53AF-E874-48F4-A69E-CE593DF05C07} /qn
MsIExec.exe /X{9239CF9B-8ABA-4C8B-85B2-BD05145FA3E5} /qn

::delete old EFS2.6 folder
rd /s /q "C:\Program Files\Pictometry\EFS2.6"

::install EFS 2.7
Batcho Installing EFS 2.7
\\gis_sql2\Pict_library_06\Maps and GIS\install\EFS 2.7.1.11\electronic field study 2.7.msi" /q

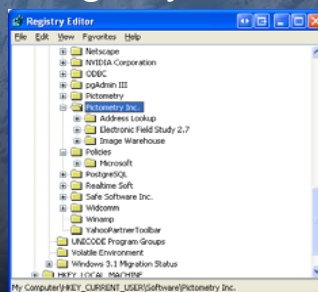
::copy the registry file to the installation folder on the local drive
xcopy \\gis_sql2\Pict_library_06\Maps and GIS\install\EFS 2.7.1.11\Registry_Edit\EFS2.7.reg
"C:\Program Files\Pictometry\EFS2.7

::navigate to the installation folderAdd the EFS registry file to the registry
cd C:\Program Files\Pictometry\EFS2.7
regedit.exe /s EFS2.7.reg

:quit
    
```

Quick demo...

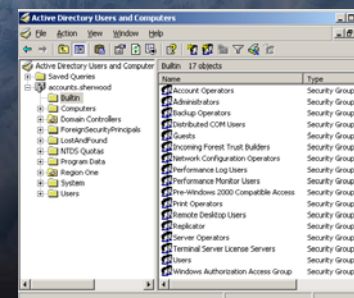
Registry Editor



- Configure EFS exactly how you want it to appear on other machines.
- Export the registry file for the Pictometry Inc. folder.

Final Steps...

- Create an Active Directory group for EFS users.



- Once the list is created, you can execute the batch file under each machine.

Adding the New Image Warehouse

- Image Tool Properties → Add → Browse for local file



- Select the .PIW and click “Open”.
- The new imagery can now be displayed by using the image tool.

Questions?