

Mapping for a Better LA

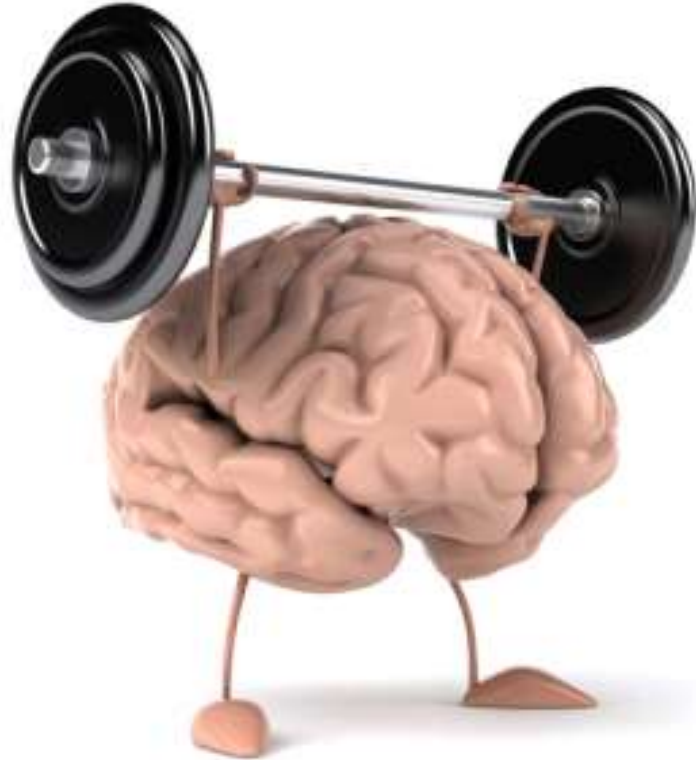


Ted Ross

CIO, Information Technology Agency, City of Los Angeles

@TedRossLA

But not enough understanding...



The power of visualizations

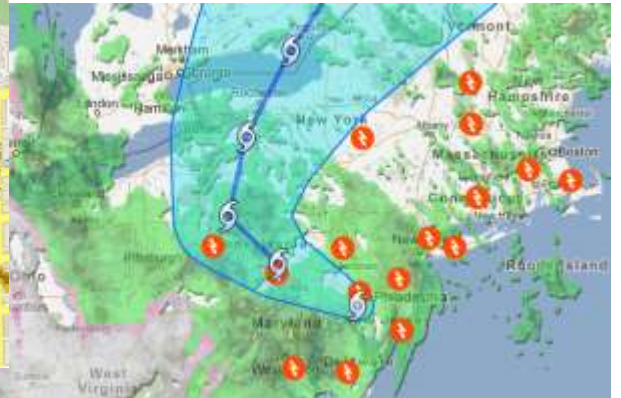
“By visualizing information, we turn it into a landscape that you can explore with your eyes, a sort of information map. When you’re lost in information, an information map is useful”

- David McCandless, Information is Beautiful

Maps → the greatest visualization

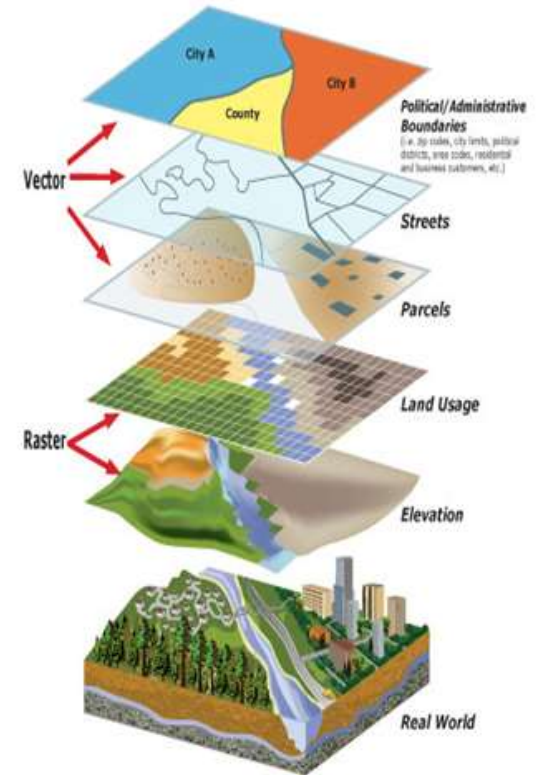
“Only a picture map can carry such a volume of data in such a small space... no other method for the display of information is so powerful.”

- Edward Tufte, Renowned Statistician



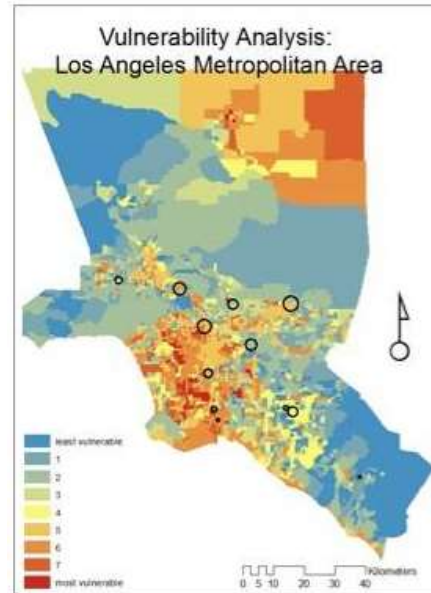
GIS... Not Your Father's Thomas Guide

- *Geographic Information Systems (GIS) are computer tools to store, manipulate and analyze geographic information on a map*
- Vector Data – Points, lines, and polygons
- Raster Data – Map features and textures
- Layers – Layers of data (streets, parcels)

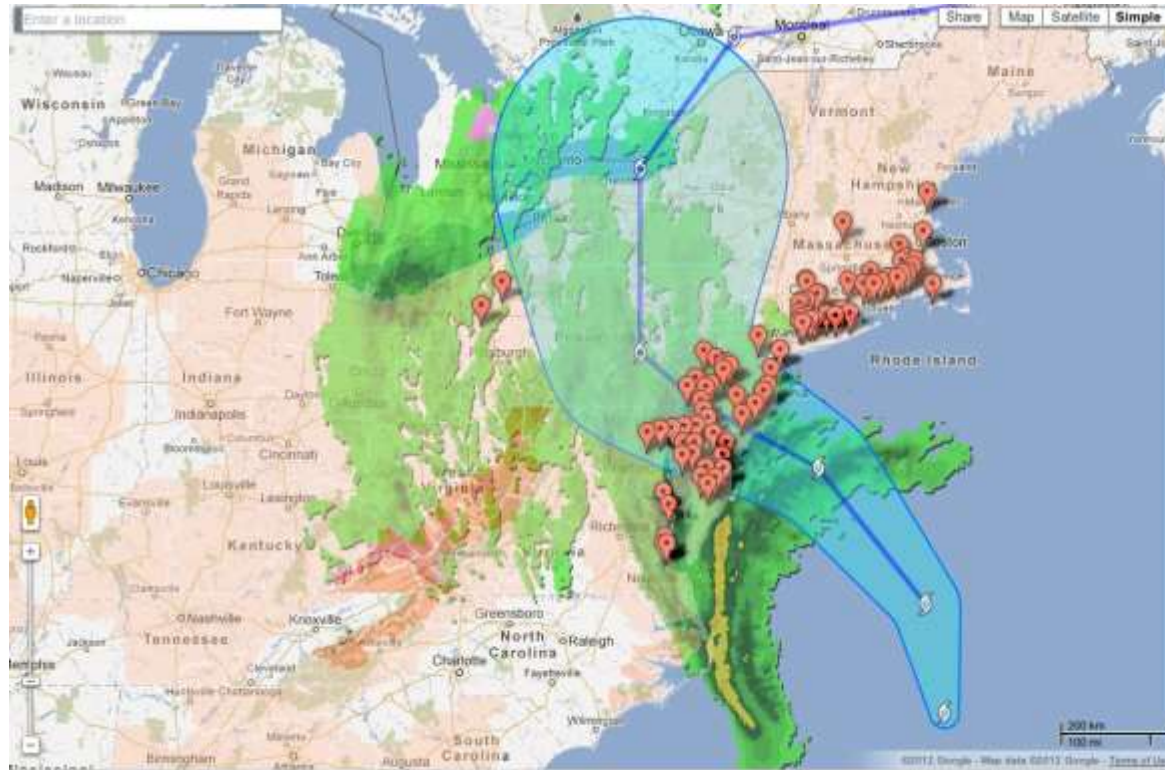


More than Mapping... “Location Intelligence”

Derive meaningful insight from geospatial relationships to solve challenges and problems



Manage a Crisis



Hurricane Sandy

Sandy is a category-1 hurricane that is expected to bring life-threatening flooding to the US mid-Atlantic coast and hurricane-force winds from Virginia to Massachusetts, Monday evening and into Tuesday.

National Hurricane Center: Latest advisory.

See also: New York City map for Sandy.

Reset to default view

Storm: Current location

Zoom to area · Download KM, See also: Historical tracks. Source: National Hurricane Center

Storm: Forecast track

Zoom to area · Download KM, Source: National Hurricane Center

Storm: 3-day forecast cone

Zoom to area · Download KM, 3-day forecast cones of active tropical storms and hurricanes. See also: 5-day forecast cones. Source: National Hurricane Center

Storm surge probability, over 6 feet

Active emergency shelters (US)

Zoom to area · View data Source: American Red Cross

Weather radar (precipitation)

Zoom to area

Legend



Source: Weather.com

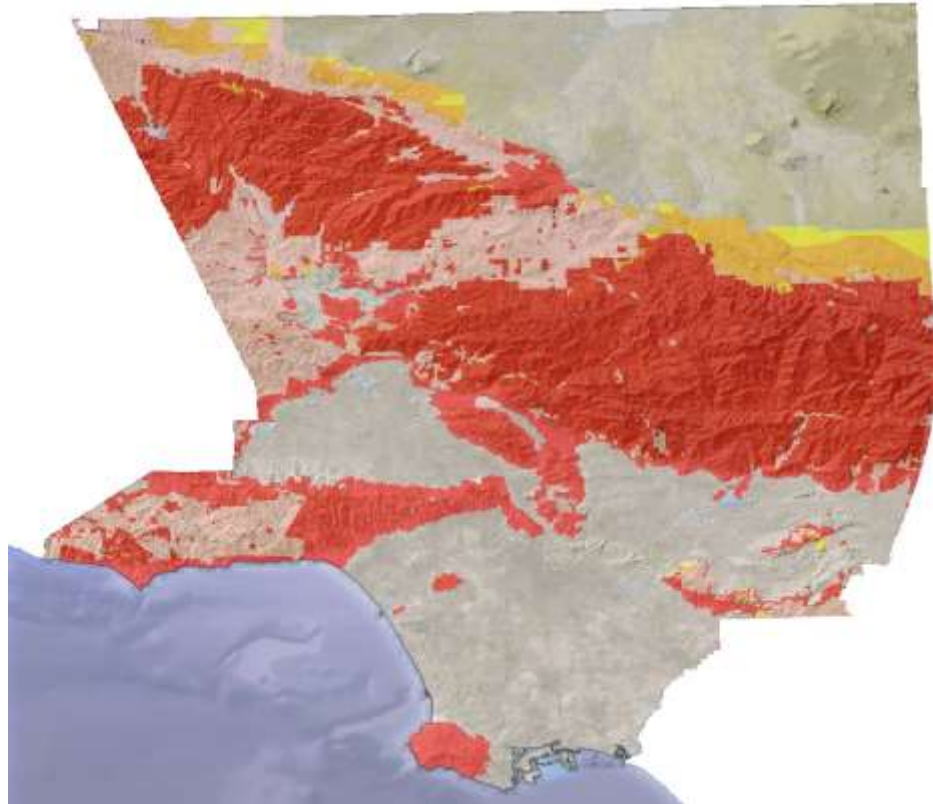
Last updated: 11:34 PM (21 minute ago)

Cloud imagery

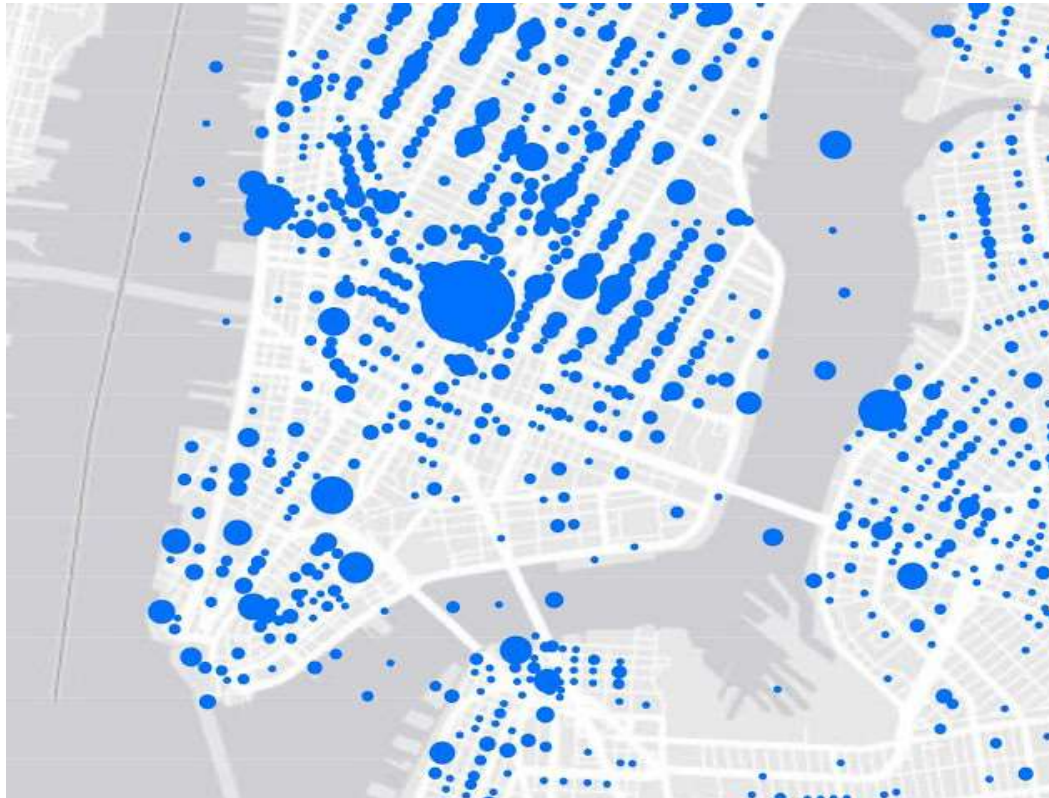
Webcams and YouTube videos

Weather and observations

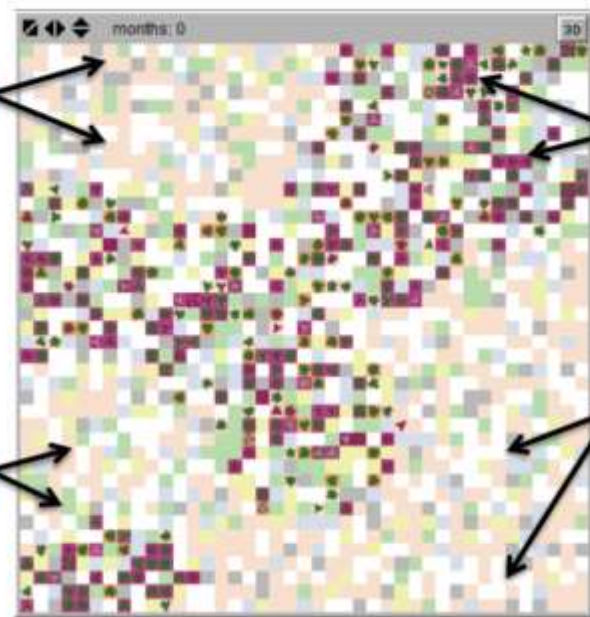
Multiply Your Resources



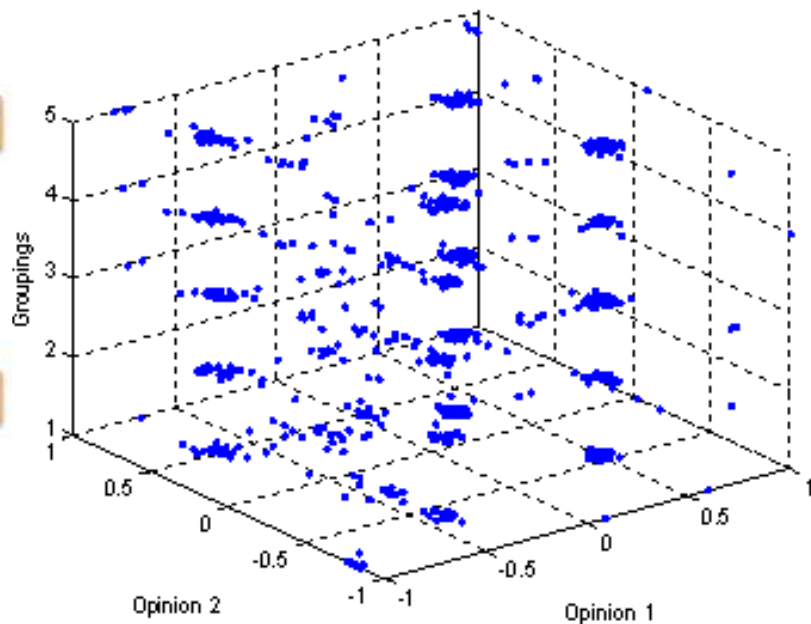
Cross Digital Dimensions



Map Complex Systems



Low Creativity Areas



Map for a Better Los Angeles

“Our world is evolving without consideration, and the result is a loss of biodiversity, energy issues, congestion in cities. But geography, if used correctly, can be used to re-design sustainable and more livable cities.”

- Jack Dangermond

And now, easier than ever... the LA Hub.